

4

3

2

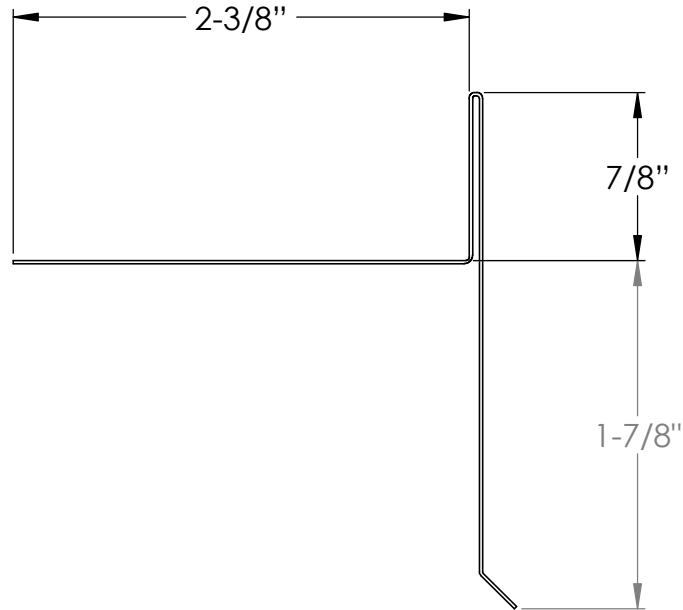
1

NOTES:

- 1. INTERPRET DRAWING IN ACCORDANCE WITH ANSI 14.100-2004.
- 2. OBTAIN DIMENSIONS FOR ALL UNDIMENSIONED FEATURES FROM THE MODEL. ALL DIMENSIONS OBTAINED FROM THE MODEL ARE BASIC UNLESS OTHERWISE SPECIFIED.
- 3. TOLERANCES FOR ALL UNTOLERANCED SURFACES =

	.010	A	B	C
--	------	---	---	---

REVISIONS				
ZONE	REV.	DESCRIPTION	EC NO.	DATE
	0	NEW DRAWING		3/12/2026



UNLESS OTHERWISE SPECIFIED:  
 DIMENSIONS ARE IN INCHES  
 TOLERANCES:  
 1/X = 1/16  
 .X = ±.040  
 .XX = ±.020  
 .XXX = ±.010  
 ANGULAR: ±3°  
 MAT. THICKNESS: ±.002

	NAME	DATE
DRAWN	CEH	3/12/2026
ENG. APPR.	MS	3/12/2026

AMERICAN CONSTRUCTION METALS

TITLE:  
**T RAKE EDGE HIGH  
 GTREH175--**

COMMENTS:  
**CATALOG**

DWG. NO.  
**KB0017301**

PROPRIETARY AND CONFIDENTIAL

THE INFORMATION CONTAINED IN THIS DRAWING IS THE SOLE PROPERTY OF AMERICAN CONSTRUCTION METALS. ANY REPRODUCTION IN PART OR AS A WHOLE WITHOUT THE WRITTEN PERMISSION OF AMERICAN CONSTRUCTION METALS IS PROHIBITED.

PART NUMBER	MATERIAL WIDTH:

SCALE: 1:1    SIZE: A    SHEET 1 OF 2

4

3

2

1

C

C

B

B

A

A

4

3

2

1

NOTES:

- 1. INTERPRET DRAWING IN ACCORDANCE WITH ANSI 14.100-2004.
- 2. OBTAIN DIMENSIONS FOR ALL UNDIMENSIONED FEATURES FROM THE MODEL. ALL DIMENSIONS OBTAINED FROM THE MODEL ARE BASIC UNLESS OTHERWISE SPECIFIED.
- 3. TOLERANCES FOR ALL UNTOLERANCED SURFACES =

$\triangle$	.010	A	B	C
-------------	------	---	---	---

REVISIONS				
ZONE	REV.	DESCRIPTION	EC NO.	DATE
	0	NEW DRAWING		3/12/2026

C

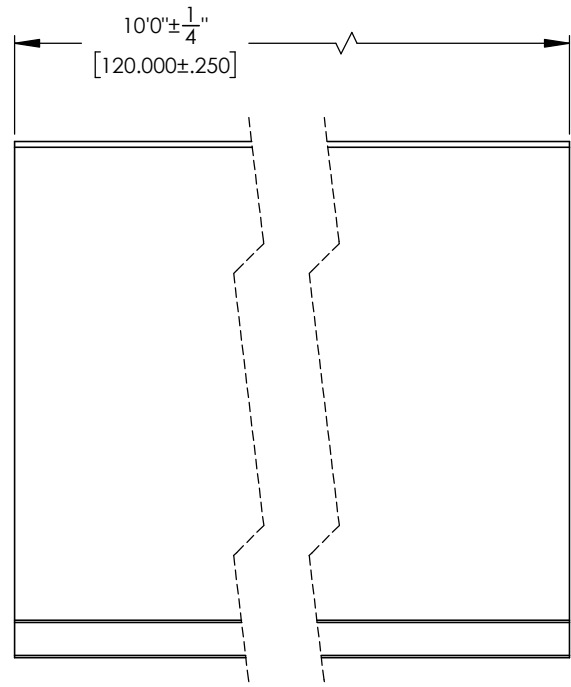
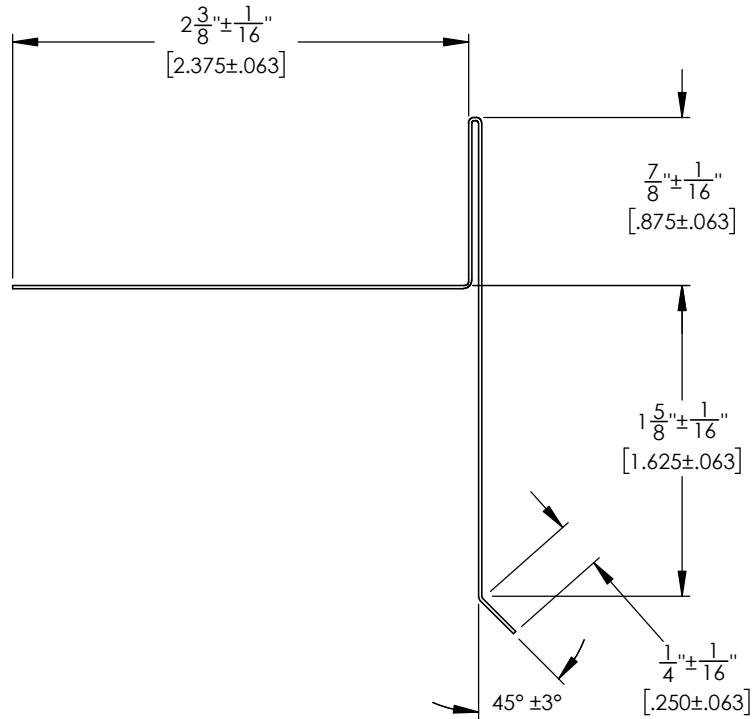
C

B

B

A

A



UNLESS OTHERWISE SPECIFIED:  
 DIMENSIONS ARE IN INCHES  
 TOLERANCES:  
 1/X = 1/16  
 .X = ±.040  
 .XX = ±.020  
 .XXX = ±.010  
 ANGULAR: ±3°  
 MAT. THICKNESS: ±.002

	NAME	DATE
DRAWN	CEH	3/12/2026
ENG. APPR.	MS	3/12/2026

AMERICAN CONSTRUCTION METALS		
TITLE: <b>T RAKE EDGE HIGH GTREH175--</b>		
DWG. NO. <b>KB0017301</b>		
SCALE: 1:1	SIZE: A	SHEET 2 OF 2

**PROPRIETARY AND CONFIDENTIAL**  
 THE INFORMATION CONTAINED IN THIS DRAWING IS THE SOLE PROPERTY OF AMERICAN CONSTRUCTION METALS. ANY REPRODUCTION IN PART OR AS A WHOLE WITHOUT THE WRITTEN PERMISSION OF AMERICAN CONSTRUCTION METALS IS PROHIBITED.

PART NUMBER	MATERIAL WIDTH: 6"	LENGTH
GTRE175--	GALVANIZED: 28ga (.015")	120"±1/4"

COMMENTS:  
**ENGINEERING/  
 PRODUCTION**

4

3

2

1